

# *Two Story Modular Storage Buildings*

---



*Some buildings shown with options.*

---

*Custom Built for All Types of Storage*

Single and Double Wide Garages • Horse Barns





# Double Wides

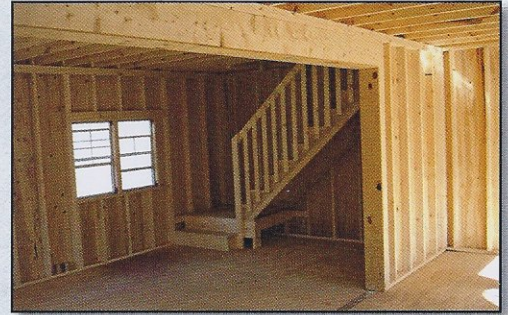
---

## Gambrel

20', 24', 28' wide • lengths from 20' to 48'

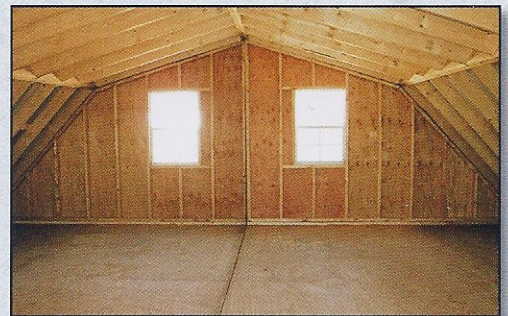


24' x 32'



Interior First Floor

3/4" Floor



Interior Second Floor

---

## A-Frame

20' or 24' wide • lengths from 20' to 48'

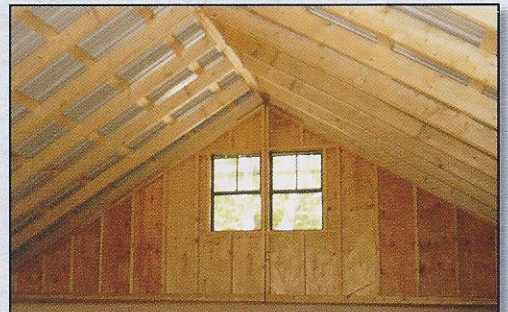


24' x 24'



Interior First Floor

Shown with Concrete Floor



Interior Second Floor

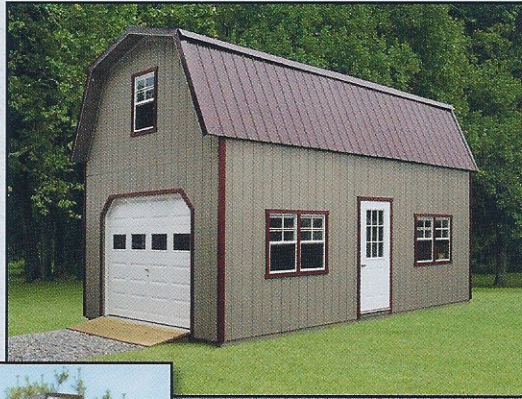
---



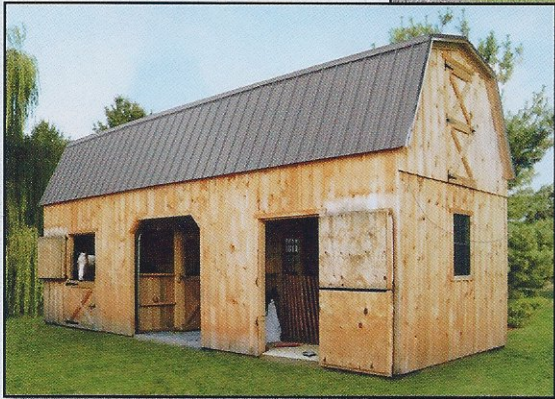
# Single Wides

## Gambrel

12' or 14' wide  
lengths from 12' to 48'

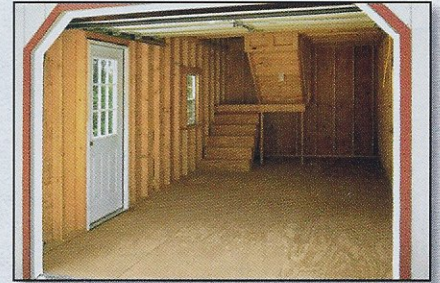


14' x 24'

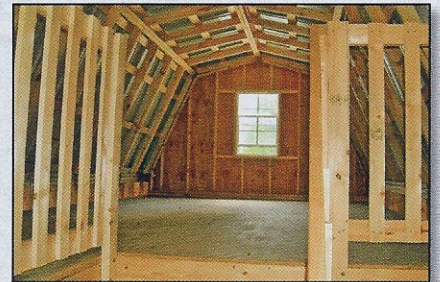


12' x 28' Horse Barn Option

*Stalls.  
Second Floor Door.  
Hay Holes Available.*



Interior First Floor  
3/4" Floor



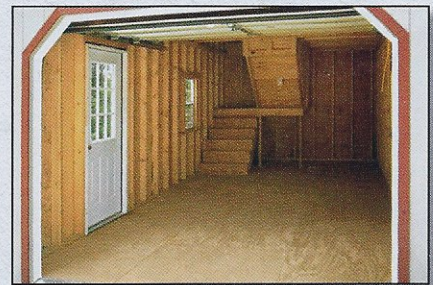
Interior Second Floor

## A-Frame

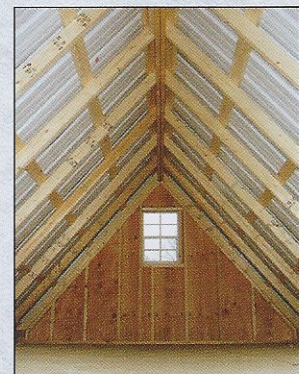
12' or 14' wide • lengths from 12' to 48'



12' x 24'



Interior First Floor  
3/4" Floor

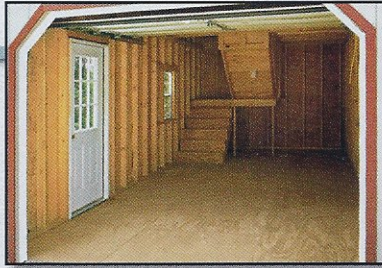


Interior Second Floor



# Options

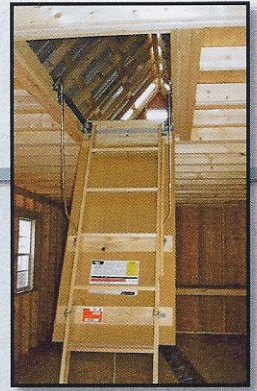
## Stairs



Single Wide

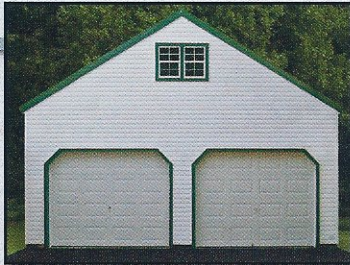


Double Wide



Pull Down  
Stairway

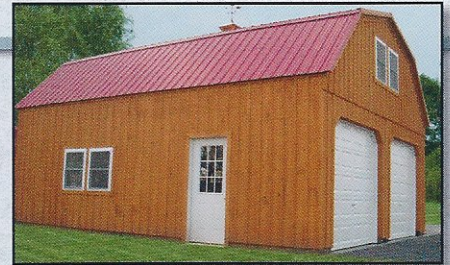
## Siding



Vinyl



T1-11



Board & Batten

## Paint Colors



## Metal Roofing Colors



## Tri-State-Gazebo

6653 Bittinger Rd. Swanton, MD 21561  
Ph: 301-245-4848 [www.tri-state-gazebo.com](http://www.tri-state-gazebo.com)